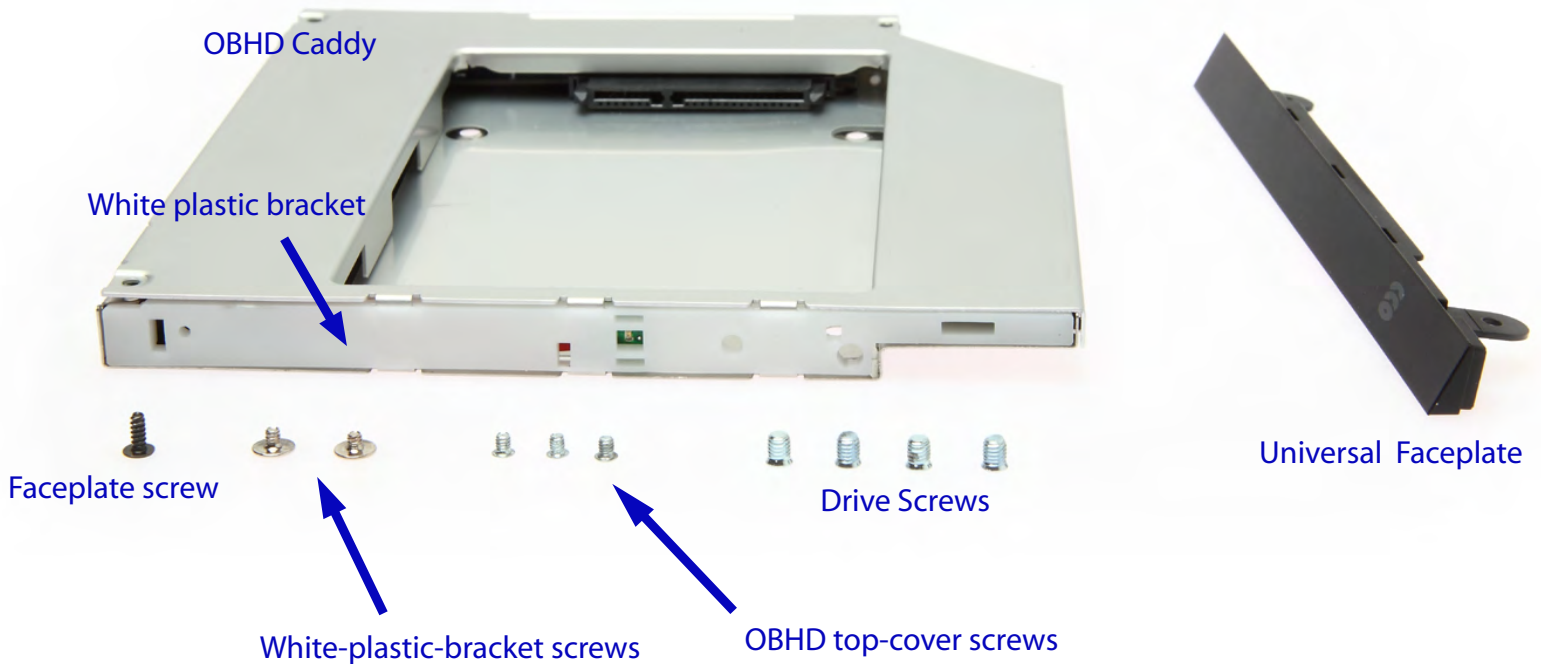


Attaching your original Optical Drive's Faceplate/Front Bezel to the OBHD (Optical Bay Hard Drive) Caddy

Use this guide to attach your optical drive's "original faceplate"/bezel to our OBHD caddy. We have included a "Universal Faceplate" just in case you do not want to transfer your optical drive faceplate to our caddy.

This OBHD caddy kit has the following contents:

- 1 - OBHD caddy with SATA connector board and white plastic bracket
- 1 - Faceplate screw
- 2 - White-plastic-bracket screws
- 3 - OBHD top-cover screws
- 4 - Drive screws
- 1 - Universal faceplate (Black)



A. Remove the faceplate from the original optical drive

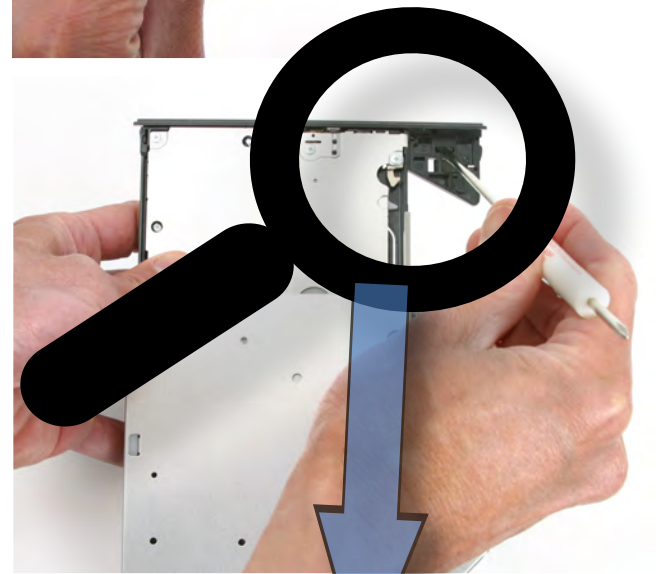
Use a pointed object like the end of a paperclip to eject the optical drive tray. This is done by using the pointed object to push on the "manual eject feature". This is a tiny hole found in the front of the faceplate as shown in the photo to the right. The tray unlocks/ejects as when you push with the pointed object.



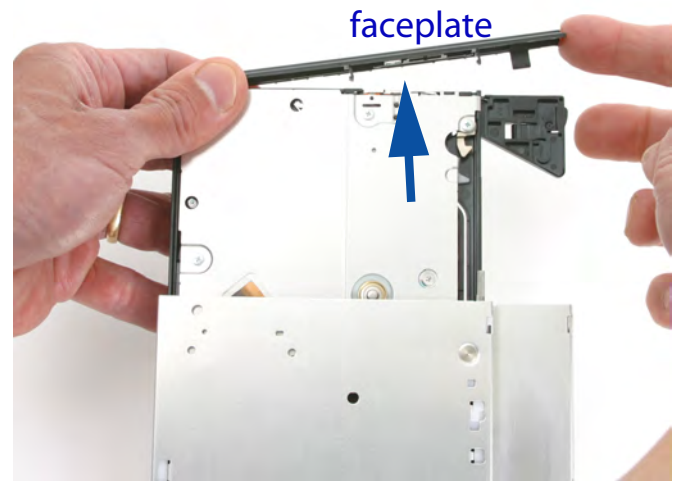
The tray ejects/pops open and slides out.



There is a clip on the underside of the optical drive tray that holds the faceplate in place. Push the clip down to unlatch the faceplate from the tray as shown in the photos to the right.



As you push on the clip it releases the faceplate

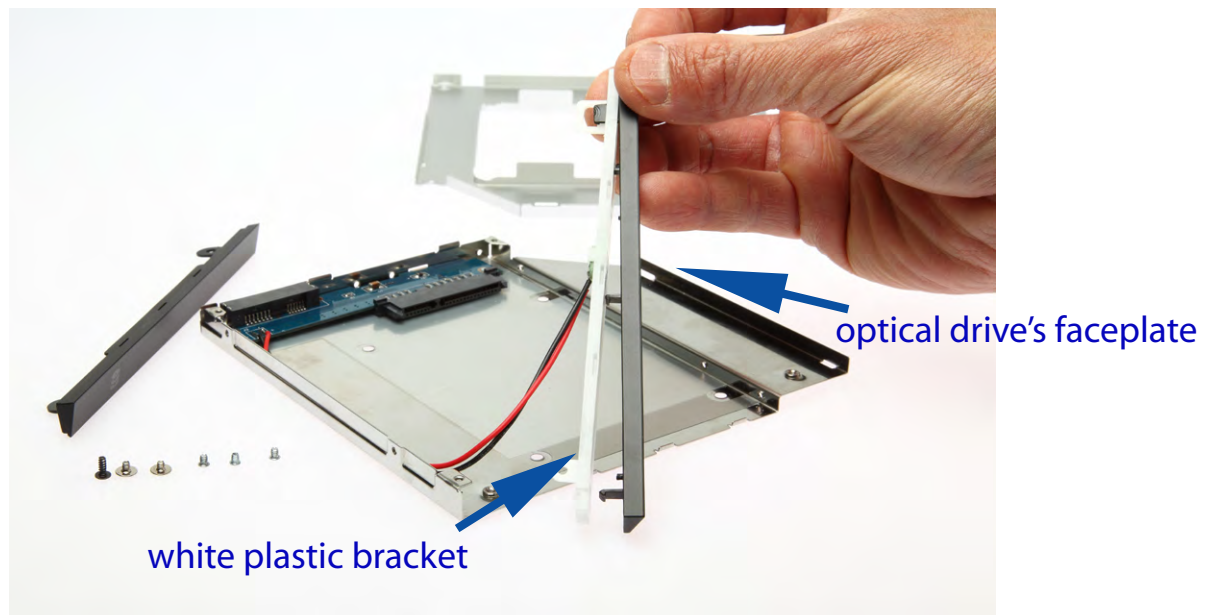


Optical drive face plate removed. It is now ready for installation on OBHD caddy

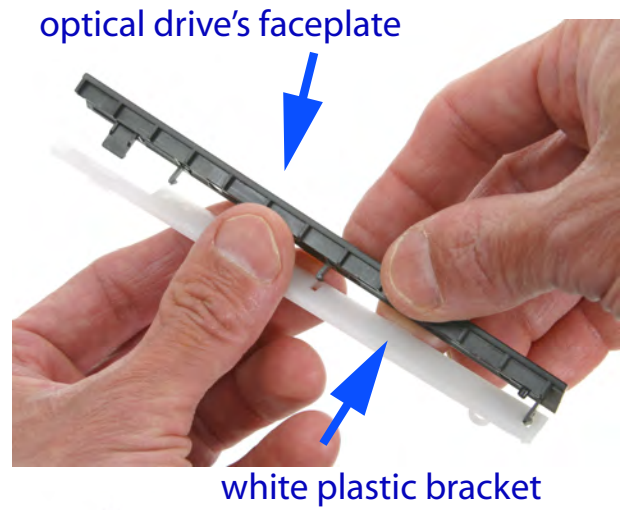


B. Attach optical drive faceplate to white plastic bracket

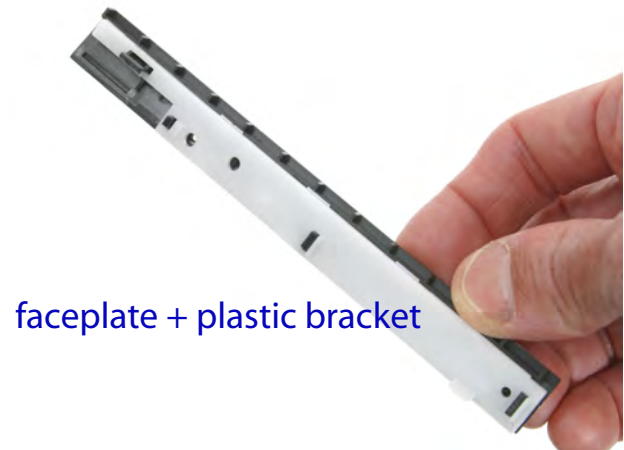
Remove top cover from OBHD caddy. Then attach "optical drive faceplate" to "white plastic bracket"



Attach optical drive's faceplate to white plastic bracket by aligning the clips on the faceplate with the holes on the white plastic bracket

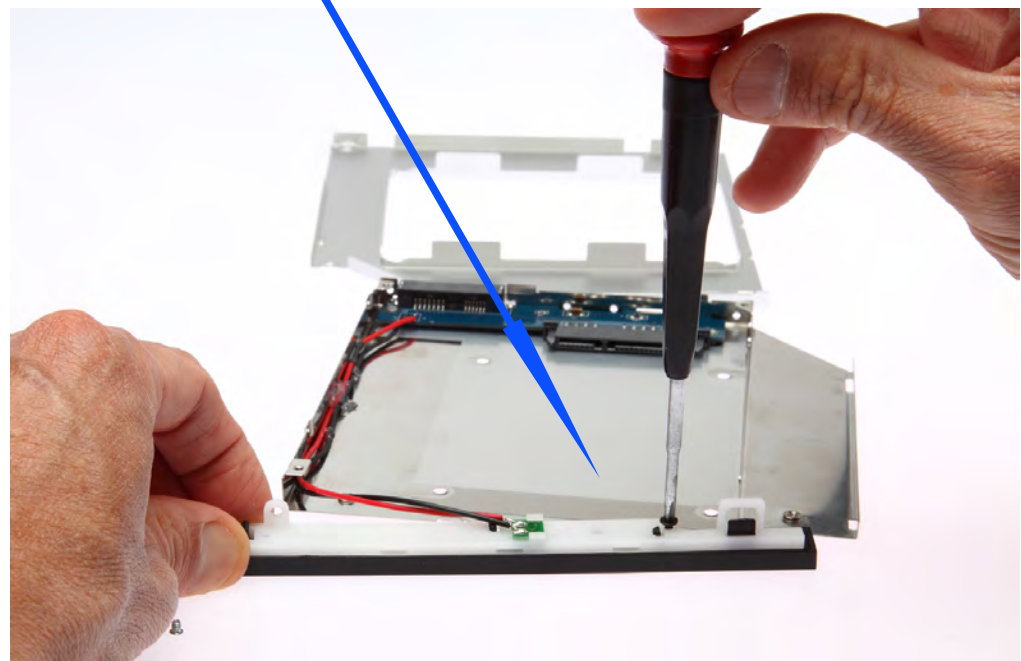


If clips are aligned properly, the faceplate and white plastic bracket snap into place



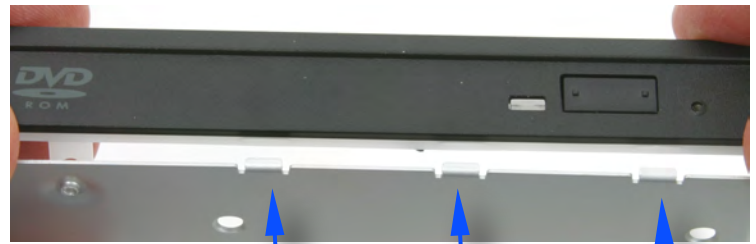
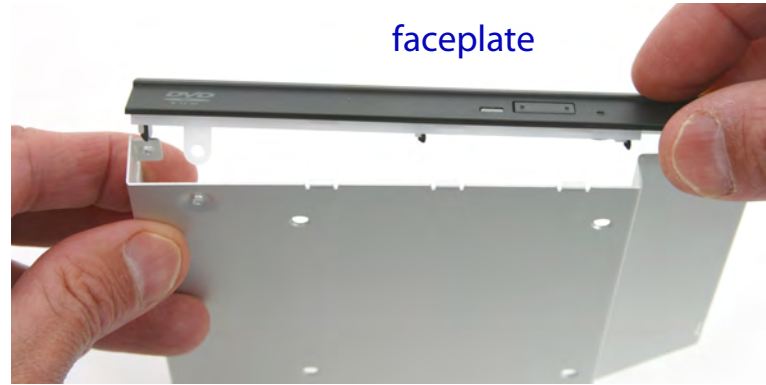
Using a screw driver gently secure the optical drive faceplate and white plastic bracket with the screw as shown (Faceplate screw).

IMPORTANT: Don't over torque the screw or you will strip the plastic faceplate



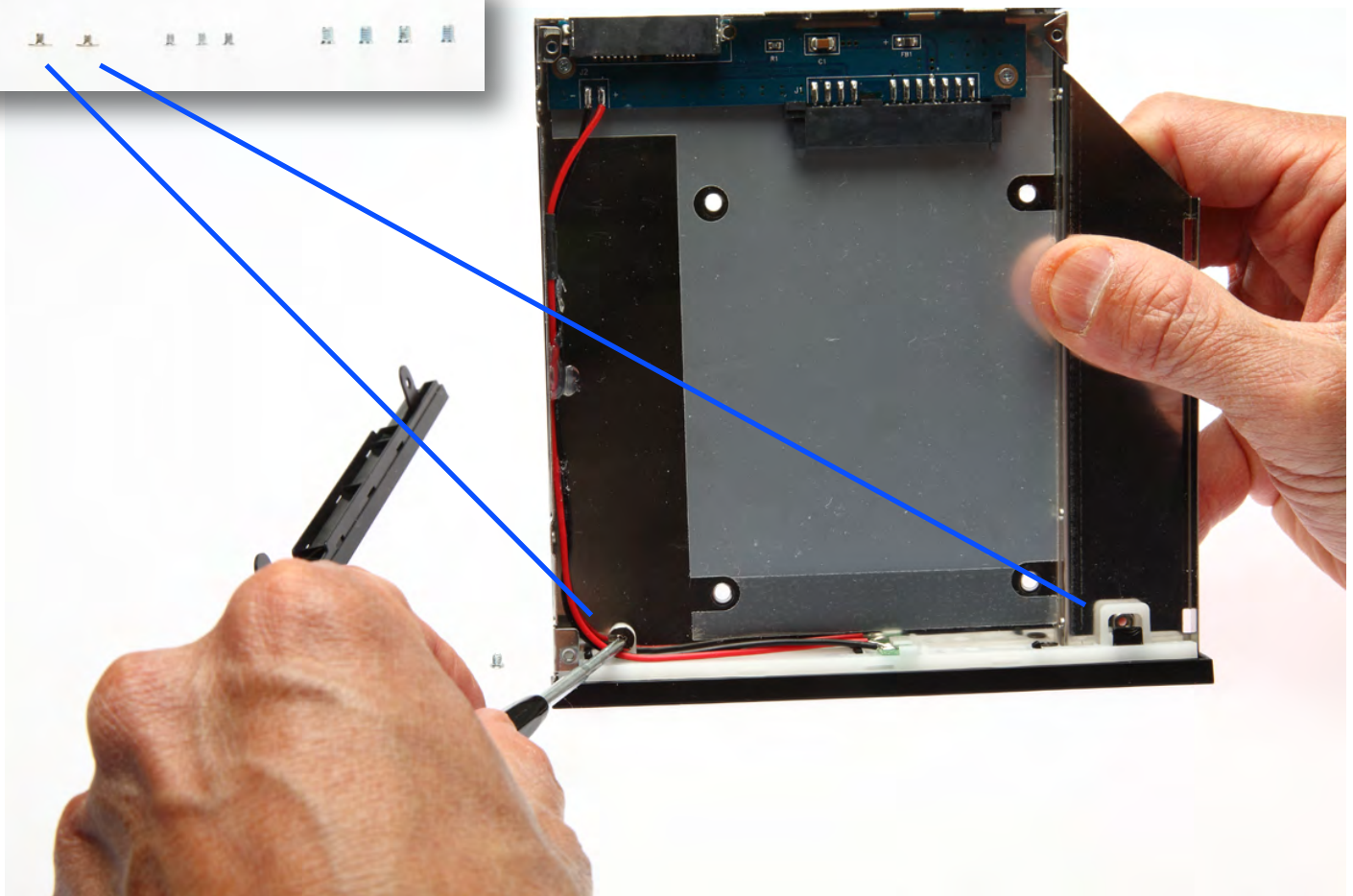
C. Attach faceplate to caddy

Attach the faceplate to the caddy by aligning the tabs found at the front of the metal caddy with the notches on the plastic bracket



align tabs on metal caddy with notches

Secure faceplate to caddy with screws

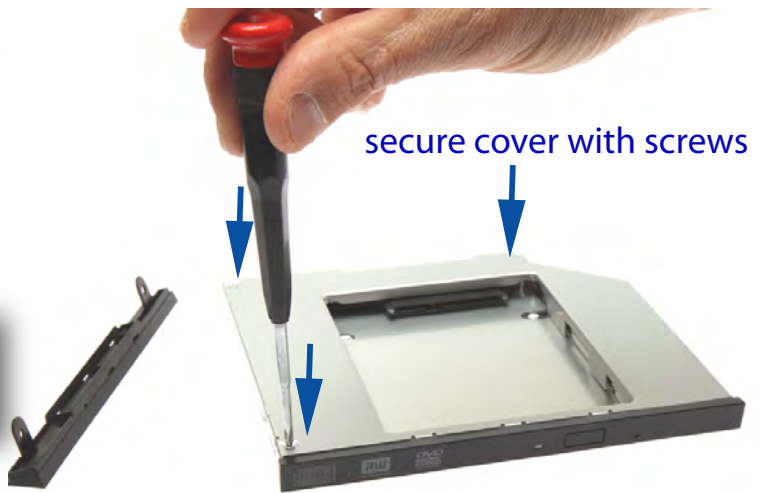


D. Replace cover and Insert drive in caddy

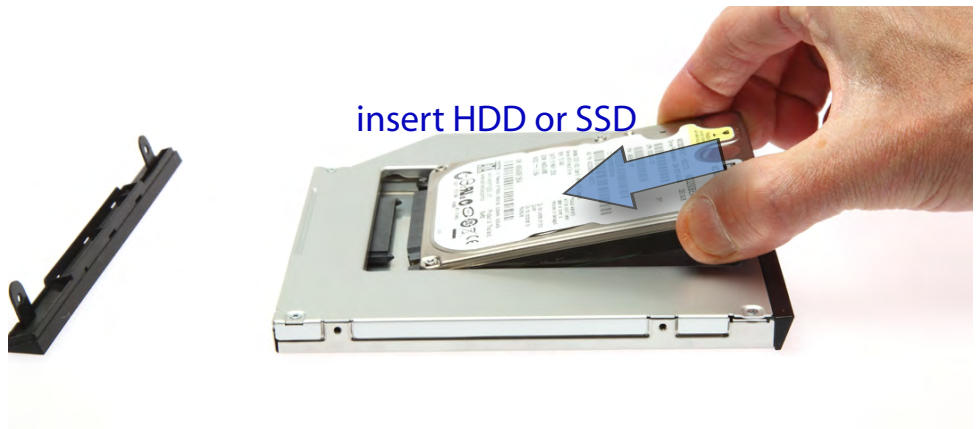
Installation of faceplate to caddy complete!
Place top cover over caddy.



Secure the top cover to caddy with the 3 small screws



Insert HDD into caddy



Turn caddy over and secure HDD / SSD to bottom of caddy with the four HDD screws

